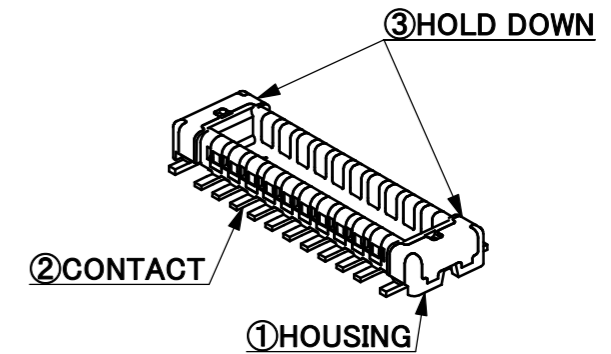
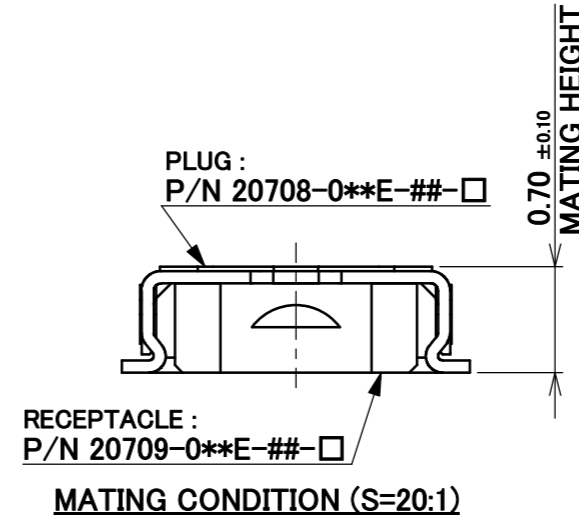
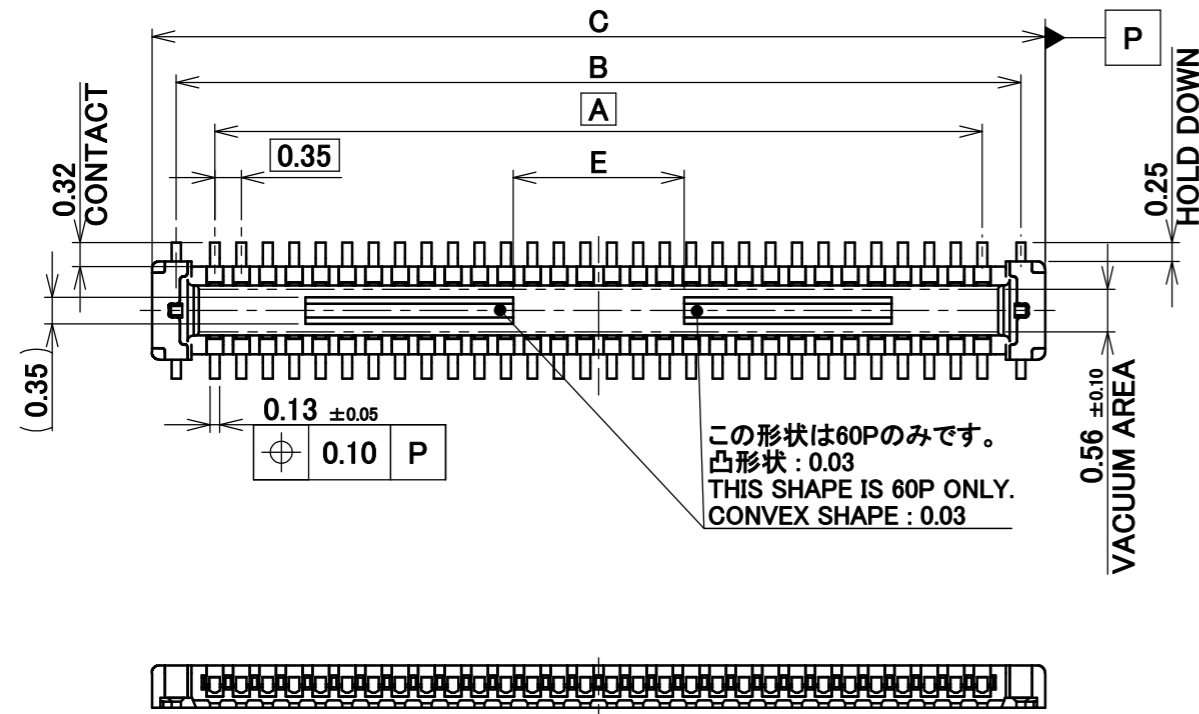


Recommended P/N 20708-0**E-01-□

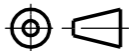
PART No.	Pos.	A	B	C	D	E	PART No. 20708-0**E-##-□	CONDUCTIVITY TYPE (##)	QTY. IN REEL (□)	APPLICABLE POSITION NUMBER (**)									
										-	-	-	-	-	-	34	40	50	-
20708-010E-##-□	10	1.40	2.42	3.06	3.92	-	20708-0**E	NORMAL(NONE)	20,000(NONE)	-	-	-	-	-	-	34	40	50	-
20708-014E-##-□	14	2.10	3.12	3.76	4.62	-	20708-0**E-00-M	NORMAL(00)	5,000(M)	-	-	-	-	-	-	34	40	50	-
20708-018E-##-□	18	2.80	3.82	4.46	5.32	-	20708-0**E-01	HIGH(01)	20,000(NONE)	10	14	18	20	24	30	34	40	50	60
20708-020E-##-□	20	3.15	4.17	4.81	5.67	-	20708-0**E-01-M	HIGH(01)	5,000(M)	10	14	18	20	24	30	34	40	50	60
20708-024E-##-□	24	3.85	4.87	5.51	6.37	-													
20708-030E-##-□	30	4.90	5.92	6.56	7.42	-													
20708-034E-##-□	34	5.60	6.62	7.26	8.12	-													
20708-040E-##-□	40	6.65	7.67	8.31	9.17	-													
20708-050E-##-□	50	8.40	9.42	10.06	10.92	-													
20708-060E-##-□	60	10.15	11.17	11.81	12.67	2.26													

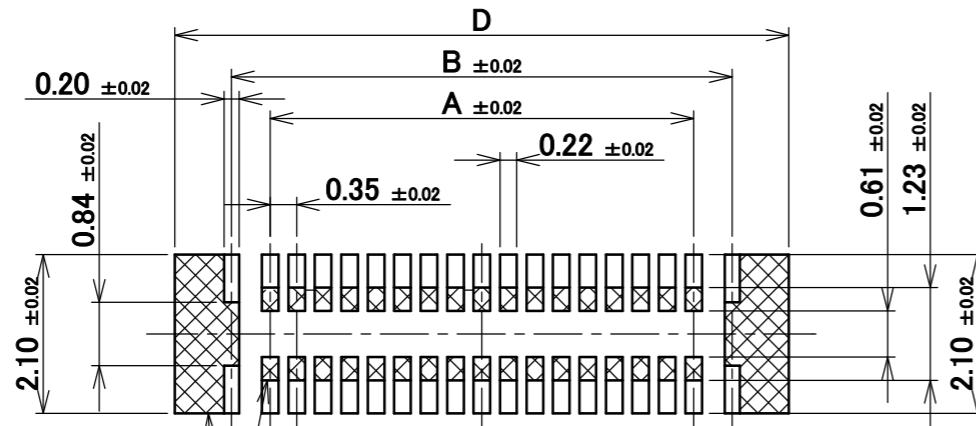


NO.	DISCRIPTION	MATERIAL	FINISH , REMARKS
3	HOLD DOWN	CORSON ALLOY	ALL OVER Ni 1.27 μ m MIN. CONTACT PART Au 0.1 μ m MIN. SOLDERING PART Au 0.01 μ m MIN.
2	CONTACT	PHOSPHOR BRONZE P/N : 20708-0**E CORSON ALLOY P/N : 20708-0**E-00-M	ALL OVER Ni 1.27 μ m MIN. CONTACT PART Au 0.1 μ m MIN. SOLDERING PART Au 0.01 μ m MIN.
1	HOUSING	LCP	UL94V-0, BLACK

REV.	ECN	BY	DATE	APP.	APP.	DATE	DWG. No.	20708	SIZE	A3	SHEET	1/6	REV.	12
12	Z190514	R.S	2019/04/12	TAK	ANGLE	±2°	6 OVER 30 MAX.	±0.3	PROJECTION	SERIES No. R1	CUSTOMER COPY			
11	Z180678	R.H	2018/05/28	TAK	6 MAX.	±0.2	30 OVER 120 MAX.	±0.5						
10	Z171526	Y.B	2017/12/27	TAK	GENERAL TOLERANCE.			TITLE	NOVASTACK® 35-P PLUG ASS'Y		SCALE	I-PEX		
9	Z171285	T.F	2017/11/08	TAK	DWG.	T.Hirakawa	DATE	2015/08/20	UNIT	mm				
8	Z171019	T.F	2017/09/04	TAK	CHK.	T.Tagawa	DATE	2015/08/21	SIZE	A3	SHEET	1/6	REV.	12
7	Z170719	T.F	2017/08/02	TAK	APP.	E.Kawabe	DATE	2015/08/21	DWG. No.					
REVISION RECORD														

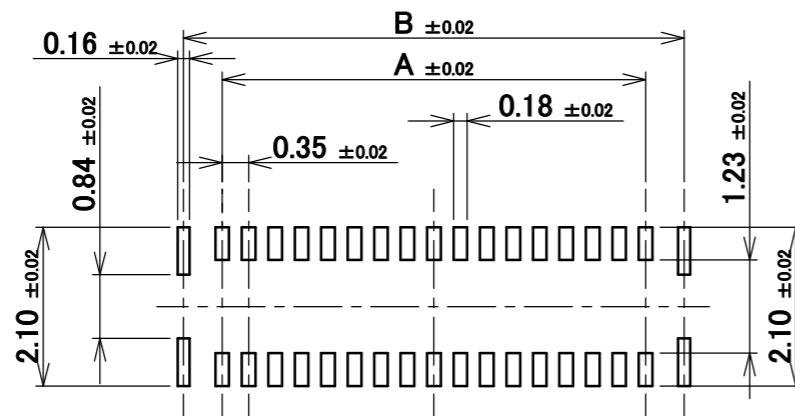
ITEMS	SPECIFICATION	
	NORMAL CONDUCTIVITY	HIGH CONDUCTIVITY
RATING VOLTAGE	50V AC (r.m.s) / DC	
RATING AMPERAGE (FOR SIGNAL CONTACT)	0.3A AC/DC (PER A CONTACT), 12.0A AC/DC(TOTAL)	0.3A AC/DC (PER A CONTACT), 12.0A AC/DC(TOTAL) 1.0A AC/DC (PER CONTACT OF UP TO 8 PINS)
RATING AMPERAGE (FOR POWER CONTACT)	2.0A AC/DC (PER A CONTACT), 4.0A AC/DC(TOTAL)	
OPERATING TEMPERATURE	233~358K(-40°C~+85°C)	
OPERATING HUMIDITY	85% MAX.(NON-CONDENSING)	
CONTACT RESISTANCE (FOR SIGNAL CONTACT)	INITIAL : 80mohm MAX. / AFTER TEST : \triangleleft 20mohm MAX.	INITIAL : 30mohm MAX. / AFTER TEST : \triangleleft 20mohm MAX.
CONTACT RESISTANCE (FOR POWER CONTACT)	INITIAL : 80mohm MAX. / AFTER TEST : \triangleleft 20mohm MAX.	INITIAL : 30mohm MAX. / AFTER TEST : \triangleleft 20mohm MAX.
INSULATION RESISTANCE	INITIAL : 1,000Mohm MIN. / AFTER TEST : 500Mohm MIN.	
DIELECTRIC WITHSTANDING VOLTAGE	AC200V 1min	
DURABILITY	20 CYCLES	
MATING FORCE (INITIAL)	1.0 N/Pin MAX.	~28P 2.0 N/Pin MAX. 30P~ 1.0 N/Pin MAX.
UNMATING FORCE (AFTER TEST)	0.15 N/Pin MIN.	~28P 0.30 N/Pin MIN. 30P~ 0.15 N/Pin MIN.
COPLANARITY	0.08 MAX.	
PRODUCT SPECIFICATION	PRS-2101	PRS-2334
TEST REPORT	TR-15069	TR-16143
PACKING STANDARD	PST-15076 (20K/REEL) PST-17038 (5K/REEL)	
INSTRUCTION MANUAL	HIM-15014	

ANGLE	$\pm 2^\circ$	6 OVER 30 MAX.	± 0.3	PROJECTION 	SERIES No. R1	CUSTOMER COPY
	6 MAX.	± 0.2	30 OVER 120 MAX.			
GENERAL TOLERANCE.				TITLE NOVASTACK® 35-P PLUG ASS'Y	SCALE	UNIT mm
DWG.	DATE					
CHK.	DATE					
APP.	DATE					
				DWG. No.	20708	SIZE A3
				SHEET	2/6	REV. 12

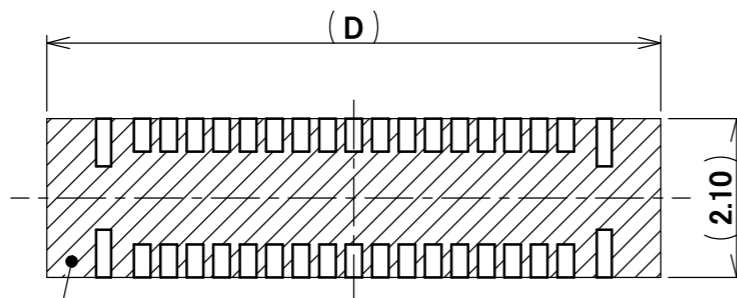


半田上がり防止の為、半田付けをしないで下さい。
 パターンを設けるときは、レジストもしくはカバーレイを設けて下さい。
 MUST BE NOT SOLDERING AREA FOR PREVENT FROM SOLDER WICKING.
 MUST BE COVER LAY OR RESIST COATING ON THE PATTERN.

RECOMMENDED PATTERN LAYOUT



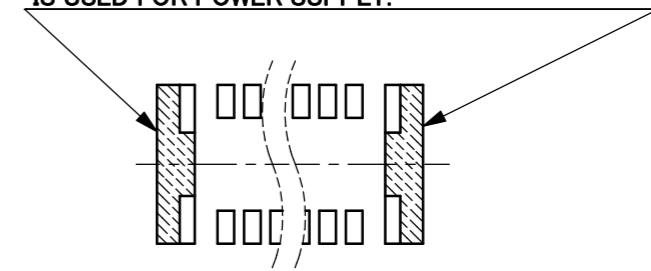
RECOMMENDED METAL MASK LAYOUT
 THICKNESS : 0.10 mm



NOTE. 1

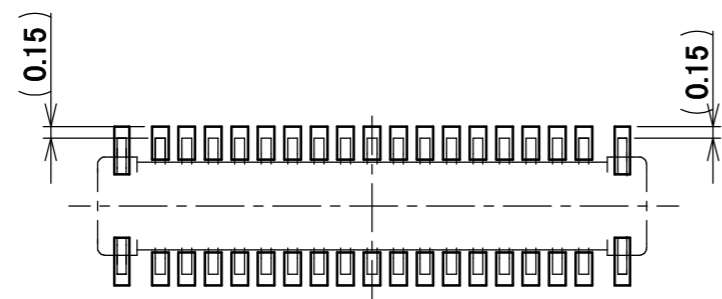
NOTES.
 1. THIS AREA CANNOT MOUNT ANOTHER COMPONENTS.

ホールドダウンを電源用としてご使用の場合は、
 両パットを図のように繋げて下さい。
 PAD IS CONNECTED LIKE FIGURE WHEN HOLD DOWN
 IS USED FOR POWER SUPPLY.

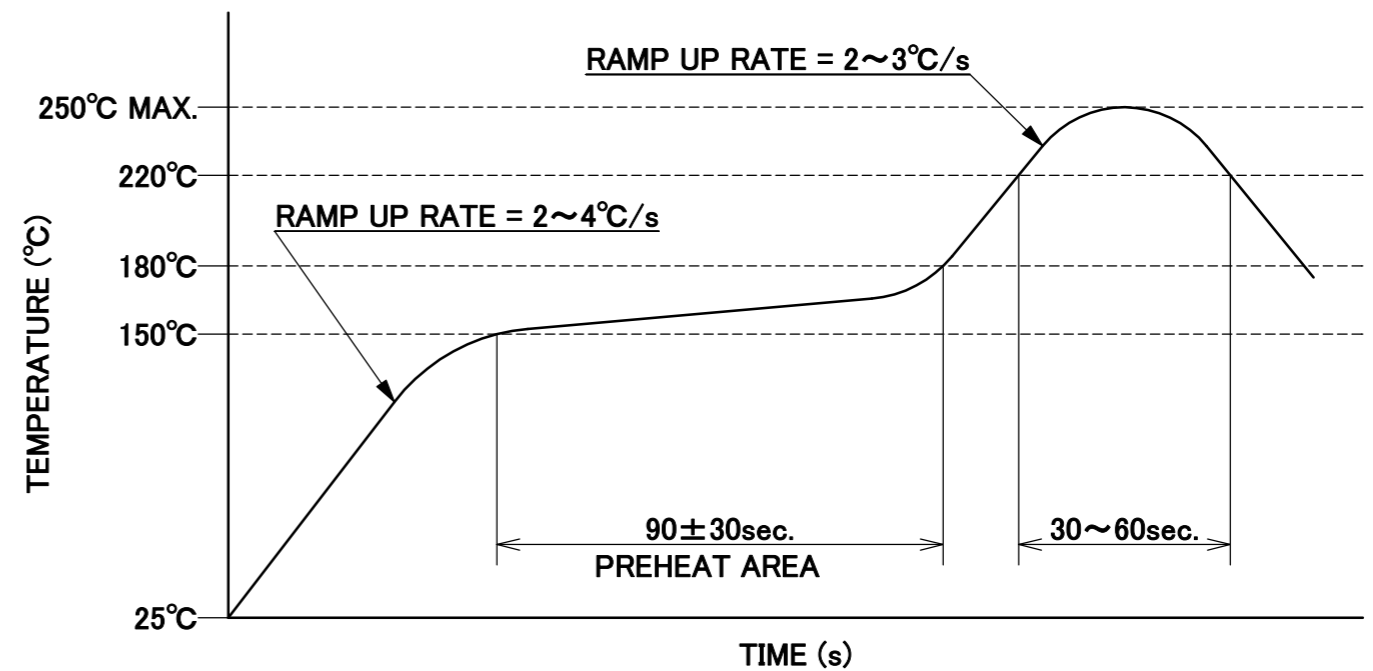


**HOLD DOWN PAD LAYOUT
 USED FOR POWER SUPPLY.**

ANGLE	±2°	6 OVER 30 MAX.	±0.3	PROJECTION	SERIES No.	CUSTOMER COPY
	6 MAX.	±0.2	30 OVER 120 MAX.	±0.5	R1	
GENERAL TOLERANCE.				TITLE	SCALE	I-PEX
DWG.	DATE	NOVASTACK® 35-P PLUG ASS'Y		10:1		
CHK.	DATE			UNIT		
APP.	DATE			mm		
				SIZE		
				DWG. No.	A3	SHEET 3/6
				20708	REV. 12	



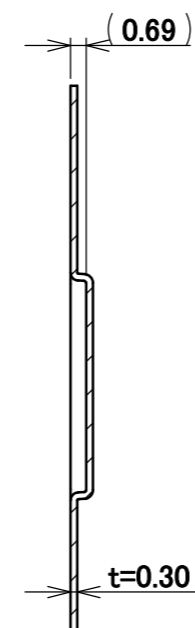
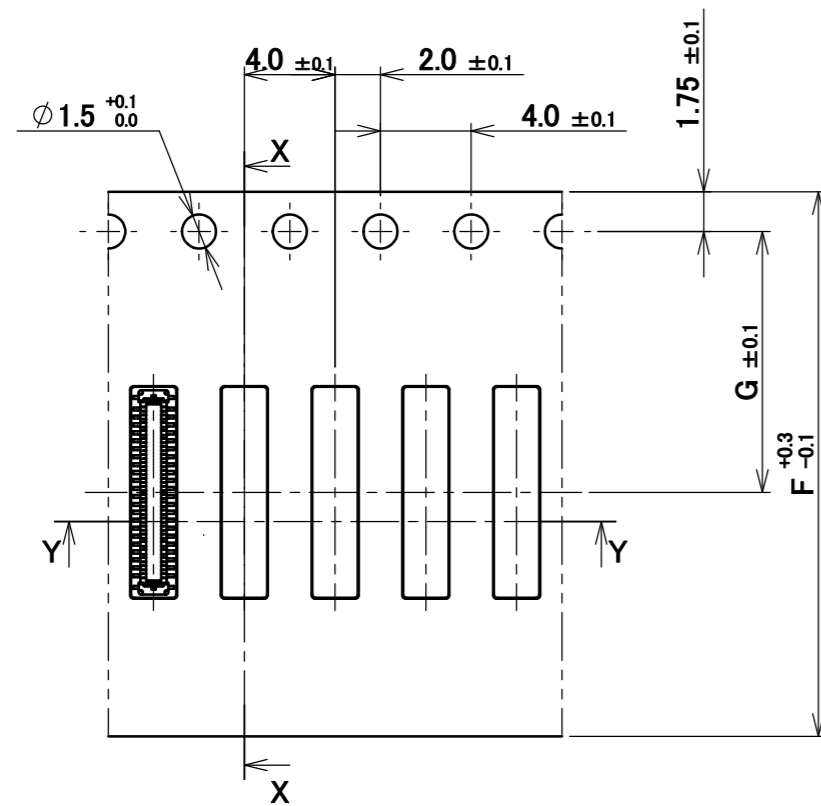
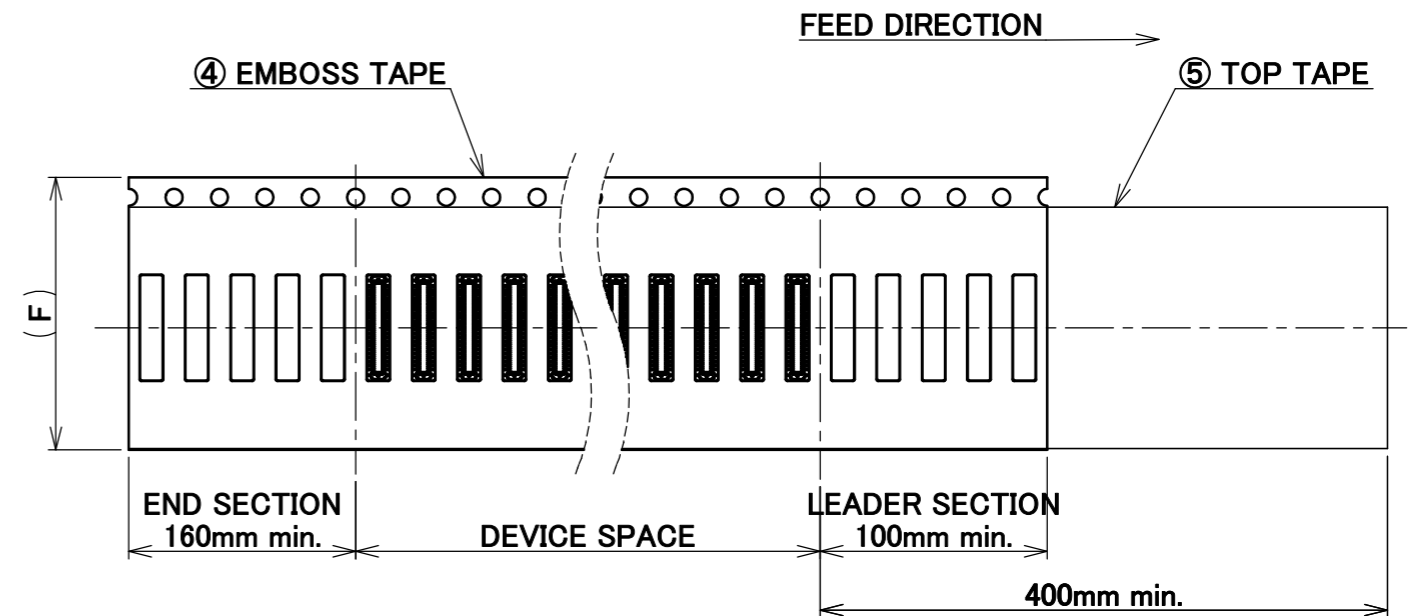
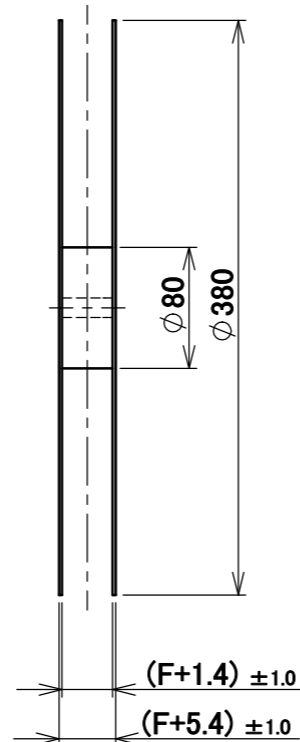
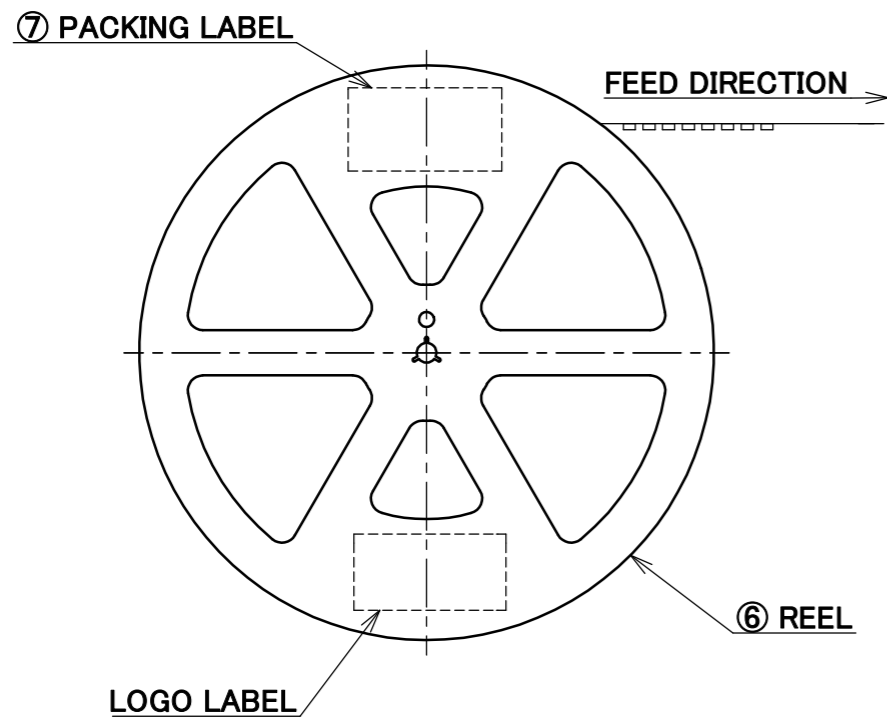
CONNECTOR ON RECOMMENDED FOOTPRINT PATTERN



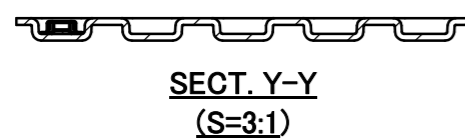
REFLOW TEMPERATURE PROFILE
SENJU METAL INDUSTRY CO., LTD. : M705-SHF(Sn96.5 Ag3.0 Cu0.5)

ANGLE	±2°	6 OVER 30 MAX.	±0.3	PROJECTION ⊕	SERIES No. R1	CUSTOMER COPY			
6 MAX.	±0.2	30 OVER 120 MAX.	±0.5						
GENERAL TOLERANCE.				TITLE NOVASTACK® 35-P PLUG ASS'Y	DWG. No. 20708	SCALE	I-PEX		
DWG.	DATE		10:1						
CHK.	DATE		UNIT mm						
APP.	DATE		SIZE A3						
						SHEET	4/6	REV.	12

PART NO.	Pos.	F	G	QTY. PER EMBOSS REEL (PIECES / REEL)	QTY. PER PACKING CARTON (REELS / CARTON)
20708-0**E-##	10~14P	12	5.5	20,000 / REEL	20,000 × 9 REELS = 180,000
	16~38P	16	7.5		20,000 × 7 REELS = 140,000
	40~70P	24	11.5		20,000 × 5 REELS = 100,000



SECT. X-X
(S=3:1)



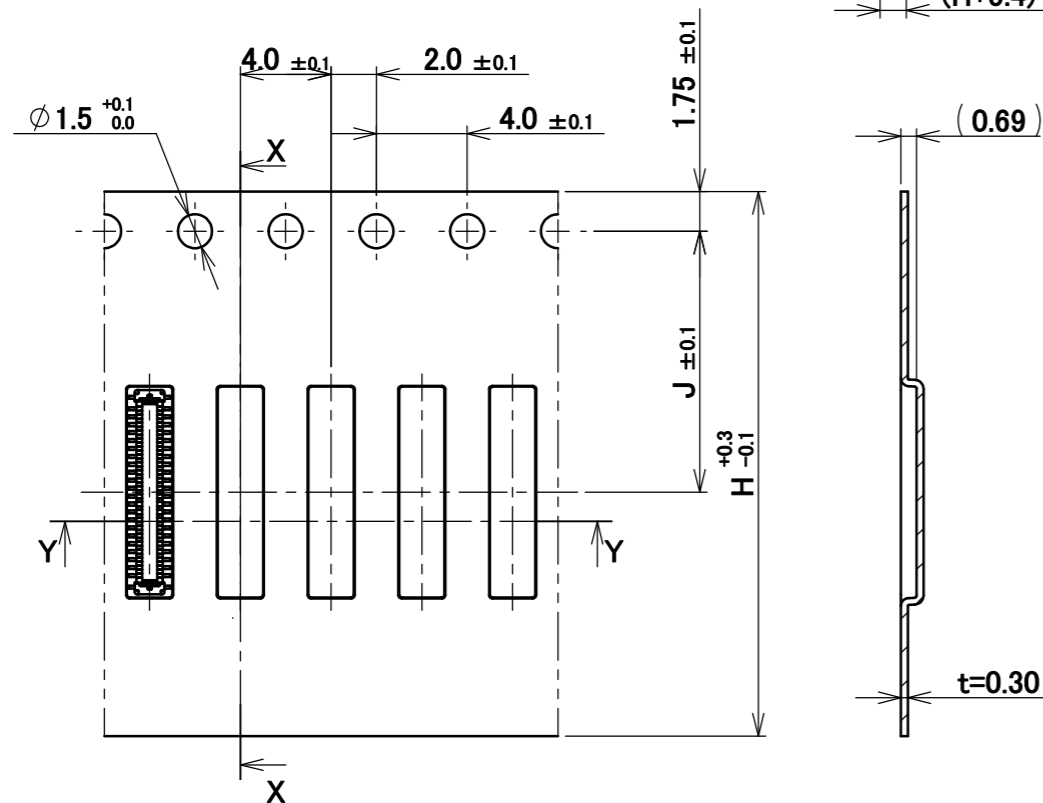
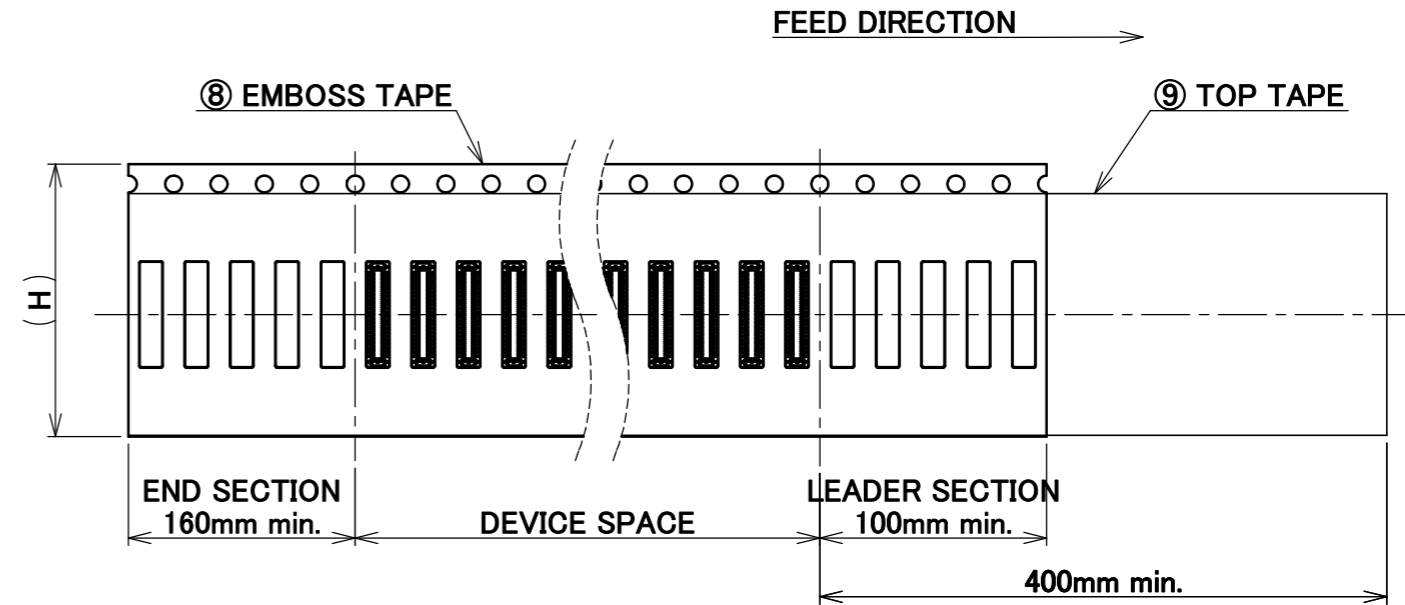
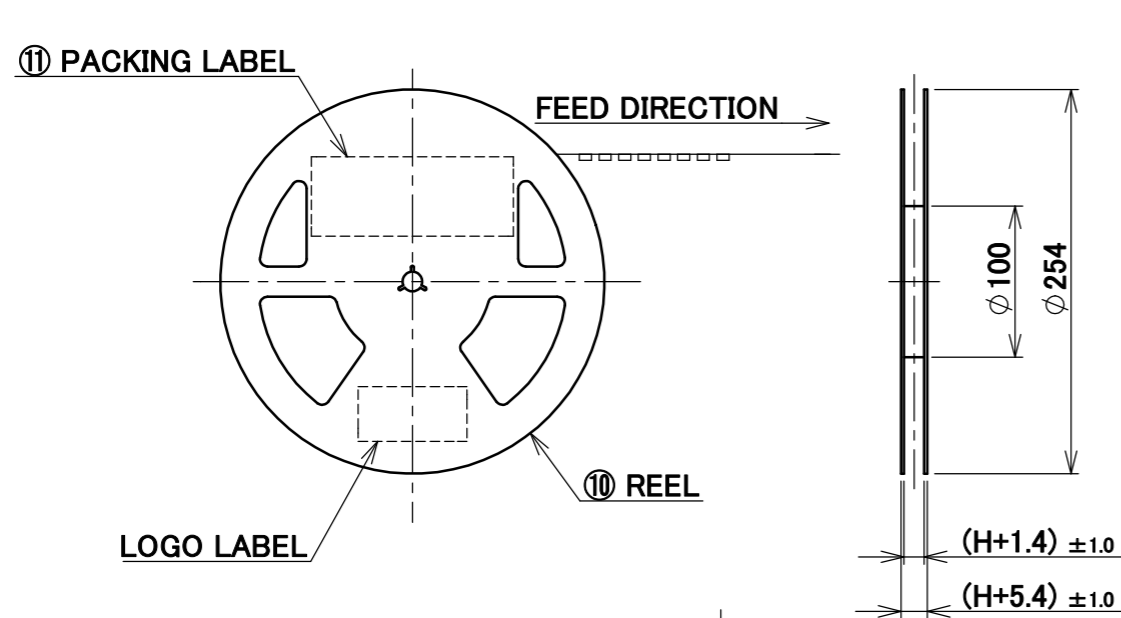
NOTES.

- TAPING SPECIFICATION FOLLOWS JIS C 0806 (IEC 60286-3).
- MAKE EMPTY SECTION OF LEADER AND END ON EACH END OF THE TAPE.
- TOP TAPE SHALL NOT STICK OUT FROM EMBOSS TAPE.
- TOP TAPE SHALL NOT COVER FEED HOLE.

NO.	DISCRIPTION	MATERIAL	FINISH , REMARKS
7	PACKING LABEL	-	-
6	REEL	PS	ANTI-STATIC TYPE BLACK
5	TOP TAPE	PET t=0.062 TRANSPARENCY	ANTI-STATIC TYPE
4	EMBOSS TAPE	TRANSPARENCY	ANTI-STATIC TYPE

ANGLE	±2°	6 OVER 30 MAX.	±0.3	PROJECTION	SERIES No.	CUSTOMER COPY
6 MAX.	±0.2	30 OVER 120 MAX.	±0.5		R1	
GENERAL TOLERANCE.				TITLE	NOVASTACK® 35-P PLUG ASS'Y	
DWG.	DATE			SCALE		
CHK.	DATE			1:X		
APP.	DATE			UNIT		
				DWG. No.	20708	mm
						SIZE
						A3
						SHEET 5/6
						REV. 12

PART NO.	Pos.	H	J	QTY. PER EMBOSS REEL (PIECES / REEL)	QTY. PER PACKING CARTON (REELS / CARTON)
20708-0**E-##-M	10~14P	12	5.5	5,000 / REEL	5,000 × 9 REELS = 45,000
	16~38P	16	7.5		5,000 × 7 REELS = 35,000
	40~70P	24	11.5		5,000 × 5 REELS = 25,000



SECT. X-X
(S=3:1)

SECT. Y-Y
(S=3:1)

NOTES.

6. TAPING SPECIFICATION FOLLOWS JIS C 0806 (IEC 60286-3).
7. MAKE EMPTY SECTION OF LEADER AND END ON EACH END OF THE TAPE.
8. TOP TAPE SHALL NOT STICK OUT FROM EMBOSS TAPE.
9. TOP TAPE SHALL NOT COVER FEED HOLE.

NO.	DISCRIPTION	MATERIAL	FINISH , REMARKS
11	PACKING LABEL	-	-
10	REEL	PS	ANTI-STATIC TYPE BLACK
9	TOP TAPE	PET t=0.062 TRANSPARENCY	ANTI-STATIC TYPE
8	EMBOSS TAPE	TRANSPARENCY	ANTI-STATIC TYPE

ANGLE	±2°	6 OVER 30 MAX.	±0.3	PROJECTION	SERIES No.	CUSTOMER COPY	
6 MAX.	±0.2	30 OVER 120 MAX.	±0.5		R1		
GENERAL TOLERANCE.				TITLE	SCALE	I-PEX	
DWG.	DATE	NOVASTACK® 35-P PLUG ASS'Y		DWG. No.	1:X		
CHK.	DATE			20708	UNIT		mm
APP.	DATE			SIZE	A3		SHEET 6/6